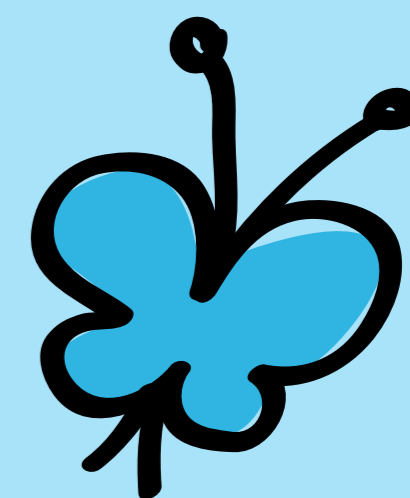
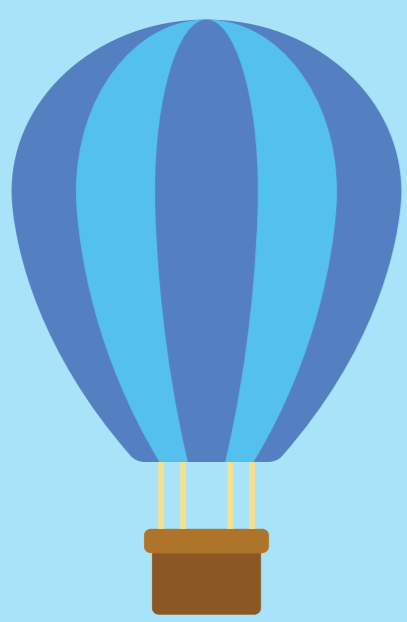


# The Bank End and Hunningley Primary School Partnership

Mission Statement:  
**'The best from everyone'**  
 - United Learning's Framework for Excellence

The Bank End and Hunningley Partnership is proud to be a part of United Learning. As such, our aim is to bring out the best in everyone. We must expect the best from everyone, all the time. Every child is a special individual, capable of extraordinary things. Who can know the limits of any child's potential? Therefore, we expect unreasonably – we constantly challenge children to do what they think they cannot, to persist, to work hard and to be at their best. From every adult we expect the same: that they are at their best, expect unreasonably of themselves, are determined and resilient and pass those expectations on to the children in all they do. We act with the utmost love, care and good faith – the highest standards come with the greatest attention to the wellbeing of all.



## Pupil Charter

At the Bank End and Hunningley Partnership we will work hard to grow children's characters so they develop compassion and become more aspirational for their futures.

We promise to:

1. Support children to be **ambitious** – by inspiring them with great role models and great teaching
2. Build children's **confidence** – by encouraging and praising them for joining in and putting themselves in the spotlight
3. Develop children's **creativity** – by giving them a broad and exciting curriculum in every year group
4. Teach children to **respect** – by immersing them in a culture of integrity, compassion and empathy
5. Encourage **enthusiasm** – by rewarding children for being motivated and hard-working learners
6. Fuel **determination** – by reminding children to keep going even when learning and life is hard



**Worsbrough Bank End Primary School**  
 The best in everyone™  
 Part of United Learning



**Hunningley Primary School**  
 The best in everyone™  
 Part of United Learning